



© Lana Grossa GmbH

Design 52 – Classici 27

PULLOVER
COOL WOOL & COOL WOOL VINTAGE

PULLOVER · COOL WOOL & COOL WOOL VINTAGE

Design 52 – Classici 27



Size 48 (50/52, 54)

Instructions are given for first size. Figures in parenthesis refer to larger sizes. When only one figure is given, it applies to all sizes.

Materials: 400 (450, 500) g of Lana Grossa **Cool Wool** (100% superfine Merino wool; 160 m/50 g) in Natural (col 590), 150 (200, 250) g of Lana Grossa **Cool Wool Vintage** (100% superfine Merino wool; 160 m/50 g) in Charcoal (col 7370) and 100 (150, 150) g in Light Grey (col 7369). Size 3 and 4 mm needles; size 3 mm circular needle, 40 cm long.

Rib patt: K1, p1.

St st: K on RS, p on WS.

Stripe patt 1: [14 rows in Light Grey, 16 rows in Natural] 2 times, [7 rows in Charcoal, 7 rows in Natural] 4 times, 7 rows in Charcoal, 22 rows in Natural, 22 rows in Charcoal, 22 rows in Natural = 189 rows. Work remainder in Charcoal.

Stripe patt 2: [14 rows in Light Grey, 16 rows in Natural] 3 times, [7 rows in Charcoal, 7 rows in Natural] 4 times, 7 rows in Charcoal = 153 rows. Work remainder in Natural.

Selvage sts: On every row: Knit first and last st.

Full-fashion decrease: At beg of RS row, selvage st, k2, skp; at end of RS row, work to last 5 sts k2tog, k2, selvage st.

Full-fashion increase: On RS row: M1R, 2 sts in from each edge.

Gauge: 24 sts and 34 rows = 10 x 10 cm in St st on size 4 mm needles.

Back: With size 3 mm needles and Natural cast on 138 (146, 156) sts. Next row (WS): Selvage st, * p1, k1; rep from *, end selvage st. Work in rib patt as set by last row until piece meas 5 cm from cast-on, ending with a RS row. Change to size 4 mm needles and Light Grey. Next row (WS): Selvage st, purl to last st, selvage st. Maintaining selvage sts, work in St st and stripe patt 1 until piece meas 41 cm from cast-on, ending with a WS row. Shape armholes: Bind off 2 sts at beg of next 2 rows. Working full-fashion dec, dec 1 st at each end of next 7 RS rows = 120 (128, 138) sts. Cont until armhole meas 22 (23, 24) cm, ending with a WS row. Shape shoulders and neck: At each shoulder edge bind off 3 sts 2 times, 4 sts 7 times (4 sts 7 times, 5 sts 2 times / 4 sts 2 times, 5 sts 7 times). At same time, when piece meas 3 cm from beg of shoulder shaping, shape neck as foll: Next row (RS): Bind off center 40 sts. Working each side separately, bind off 3 sts at each neck edge 1 time, 2 sts 1 time, 1 st 1 time. No sts rem.

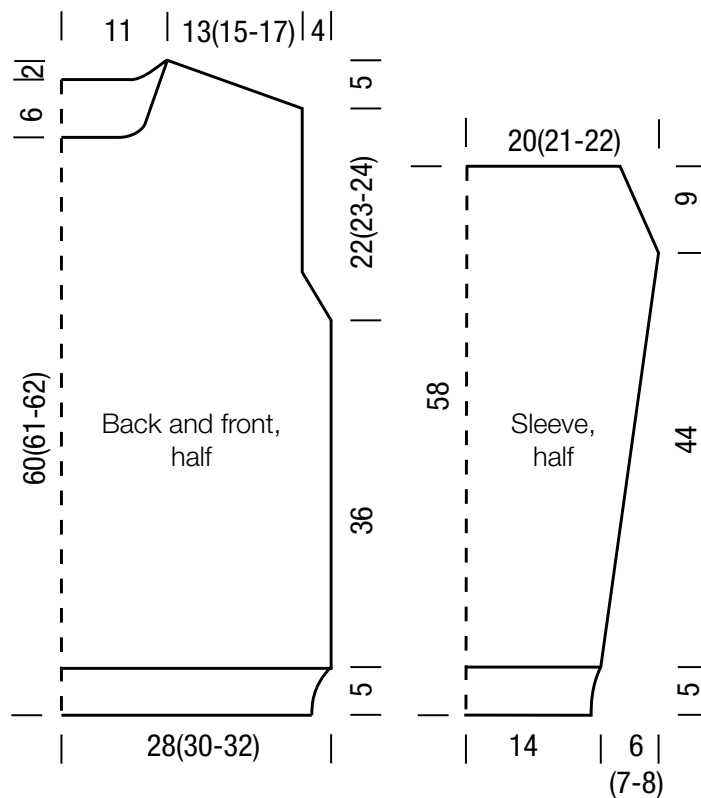
Front: Work same as back until piece meas 60 (61, 62) cm from cast-on, ending with a WS row. Shape neck: Next row (RS): Bind off center 24 sts. Working each side separately, bind off 3 sts at each neck edge 1 time, 2 sts 1 time. Working full-fashion dec, dec 1 st at each neck edge every RS row 9 times and when same length as back to shoulders, shape shoulders same as for back. No sts rem.

Sleeves: With size 3 mm needles and Natural cast on 72 sts. Next row (WS): Selvage st, * p1, k1; rep from *, end selvage st. Work in rib patt as set by last row until piece meas 5 cm from cast-on, ending with a RS row. Change to size 4 mm needles and Light Grey. Next row (WS): Selvage st, purl to last st, selvage st. Maintaining selvage sts, work in St st and stripe patt 2 and shape sleeve as foll: Working full-fashion inc, inc 1 st at each end of 13 (11, 11)th row, then every alt 10th and 12th row 9 times, then every 10th row 3 times (then every 10th row 5 times, then every alt 8th and 10th row 9 times / then every 10th row 2 times, then every 8th row 14 times) = 98 (102, 106) sts. Work even until piece meas 49 cm from cast-on, ending with a WS row. Shape sleeve cap: Bind off 2 sts at beg of next 2 rows. Working full-fashion dec, dec 1 st at each end of every alt RS row 7 times. Work 1 WS row. Bind off rem 80 (84, 88) sts.

Finishing: Pin pieces to measurements and block. Sew shoulder seams. **Neckband:** With size 3 mm circular needle and Natural, pick up and k 110 sts evenly around neck edge. Place beg of rnd marker and join for working in rnds. Work in rib patt for 3 cm. Loosely bind off all sts in rib. Sew in sleeves. Sew side and sleeve seams.

PULLOVER · COOL WOOL & COOL WOOL VINTAGE

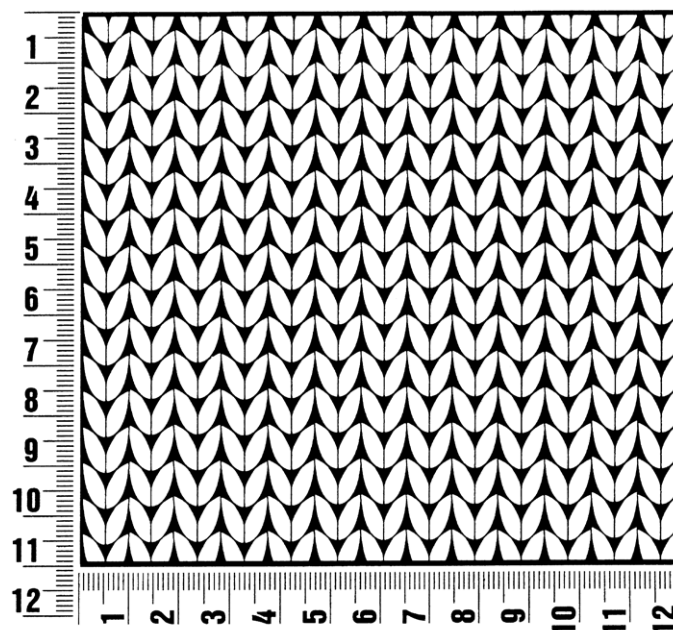
Design 52 – Classici 27



Gauge Swatch

Before you begin ...

...make a gauge swatch. Use the recommended needles, yarns and pattern stitch for your gauge swatch. It should measure approx. 12 cm x 12 cm. Cast-on and bind-off rows, as well as selvage stitches should not be included in the measurement. Pin your swatch and block it as you would the finished pieces of the garment. Count stitches and rows over 10 cm. If your gauge swatch is too small, switch to larger needles. If your gauge swatch is too big, switch to smaller needles.



Abbreviations

beg = begin(ning) · **ch** = chain · **cont** = continue · **dec** = decreas(e)(ing) · **inc** = increas(e)(ing) · **k** = knit · **kwise** = as if to knit
meas = measures · **M1L** = lift strand between sts from front to back and knit this strand through the back loop · **M1R** = lift strand between sts from the back and knit this strand through the front loop · **patt** = pattern · **pm** = place marker · **p** = purl
wise = as if to purl · **rem** = remain(ing) · **rep** = repeat(s) · **rev St st** = reverse stockinette stitch · **rnd(s)** = round(s) · **RS** = right side · **sc** = single crochet · **skp** = slip 1 stitch as if to knit, knit 1 stitch, pass slipped stitch over knitted stitch · **sk2p** = slip 1 stitch as if to knit, knit 2 together, pass slipped stitch over knitted stitch · **s2kp** = slip 2 stitches as if to knit, k 1 stitch, pass slipped stitches over knitted stitch · **sl** = slip · **st(s)** = stitch(es) · **St st** = stockinette stitch · **tbl** = through the back loop · **tog** = together · **wyib** = with yarn in back of work · **wyif** = with yarn in front of work · **WS** = wrong side · **yo(s)** = yarn over(s)

Publisher's Info

Publisher: Lana Grossa GmbH, Gaimersheim, www.lana-grossa.com

Photographer: Nicolas Olonetzky, www.nicolasolonetzky.com